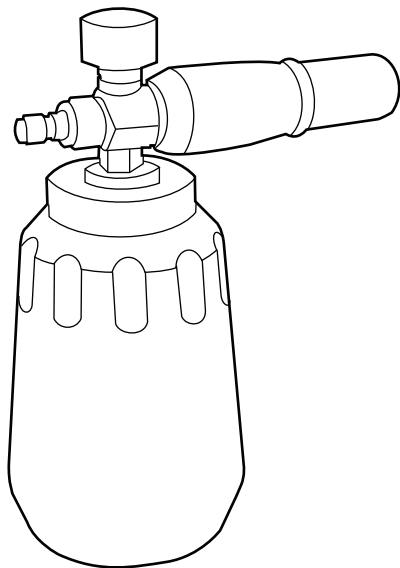


greenworks®

EN

HIGH PRESSURE FOAM CANNON

OPERATOR MANUAL



PAQ713

www.greenworkstools.com

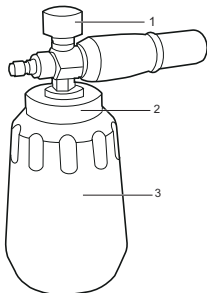
1	Description.....	4	3.2	Add detergent.....	5
1.1	Purpose.....	4	3.3	Install the high pressure soap applicator.....	5
1.2	Overview.....	4			
2	General power tool safety warnings.....	4	4	Operation.....	5
2.1	Safety instruction.....	4	4.1	Use the spray gun.....	5
2.2	Symbols on the product.....	4	4.2	Adjust the flow knob.....	6
2.3	Environmental protection.....	4	5	Maintenance.....	6
3	Installation.....	4	6	Technical data.....	6
3.1	Unpack the machine.....	4	7	Limited warranty.....	6

1 DESCRIPTION

1.1 PURPOSE

The high pressure soap applicator is designed to apply detergent to a variety of surfaces. It can be used for removing dirt and mold from decks, cement patios, house siding, cars, boats, motorcycles, patio furniture, grills, and more!

1.2 OVERVIEW



- 1 Detergent flow knob 3 Detergent container
2 Attachment head

2 GENERAL POWER TOOL SAFETY WARNINGS

⚠ WARNING

When using this product basic precautions should always be followed, including the following:

Save all warnings and instructions for future reference.

The term "power tool" in the warnings refers to your mains-operated (corded) power tool.

2.1 SAFETY INSTRUCTION

⚠ WARNING

Please read and comply with these original operating instruction prior to the initial operation and store them for later use or subsequent owners.

- To reduce the risk of injury, user must read and understand operator's manual for their pressure washer before using this accessory. Fits many brands of pressure washers up to 3700 PSI.
- Ensure compatibility and proper fitment before use.
- Wear eye protection with side shields that are marked to comply with ANSI Z87.1 There is a risk of fluid injections.

- Do not operate the product while under the influence of drugs, alcohol, or any medication.
- Do not point at any person, pets, electric devices, or the unit itself.
- Turn the pressure washer off before changing or adjusting accessories.
- For cold water use only. Save these instructions. Refer to them frequently and use them to instruct other users. If you loan product, loan them these instructions also.

2.2 SYMBOLS ON THE PRODUCT

Symbol	Explanation
	Don't hold the nozzle of the High Pressure Soap Applicator when it is on.

2.3 ENVIRONMENTAL PROTECTION

	The packaging material can be recycled. Please do not place the packaging into the ordinary trash for disposal, but arrange for proper recycling.
	Old appliances contain valuable material that can be recycled. Please arrange for the proper recycling of old appliances. Please dispose your old appliances using the appropriate collection system.

3 INSTALLATION

3.1 UNPACK THE MACHINE

⚠ WARNING

Make sure that you correctly assemble the machine before use.

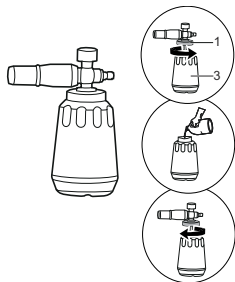
⚠ WARNING

- If the parts are damaged, do not use the machine.
- If you do not have all the parts, do not operate the machine.
- If the parts are damaged or missing, speak to the service center.

- Open the package.
- Read the documentation in the box.
- Remove all the unassembled parts from the box.
- Remove the machine from the box.

5. Discard the box and package in compliance with local regulations.

3.2 ADD DETERGENT

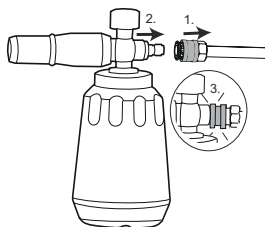


i NOTE

The Greenworks high pressure soap applicator allows you to use detergent while using your pressure washer for high-pressure cleaning.

1. Turn the attachment head counter (1) clockwise to access the detergent container (3).
2. Hold detergent container (3) with firm grip, and add detergent.
3. Once full, install the attachment head, and securely tighten.

3.3 INSTALL THE HIGH PRESSURE SOAP APPLICATOR



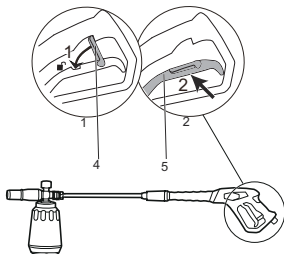
1. Using the quick connect coupler, install onto the pressure washer spray wand just as you would with any type of nozzle.

4 OPERATION

▲ WARNING

Make sure that all the connections are tight and have no leakage before operation.

4.1 USE THE SPRAY GUN



▲ WARNING

For safe control, keep your hands on the spray gun at all times.

- Pull and hold the spray gun trigger (5) to start the machine.
- Release the spray gun trigger to stop water flow through the high pressure cannon.

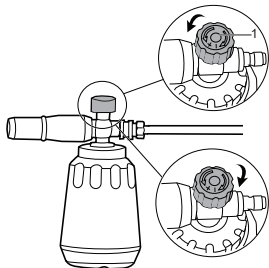
4.1.1 UNLOCK THE GUN TRIGGER

- Push the trigger safety lock-out (4) down until it clicks into the slot.

4.1.2 LOCK THE SPRAY GUN TRIGGER

- Push the trigger safety lock-out (4) up and into its original position.

4.2 ADJUST THE FLOW KNOB



i NOTE

The amount of detergent in the spray is controlled by the detergent flow knob.

1. Turn the knob (1) all the way forward to use the detergent at its highest concentration.
2. Turn the knob (1) all the way back to spray water only.

⚠ WARNING

Do not make adjustments while using the pressure washer. Stop spraying and lock out the trigger before making adjustments. Keep hands away from nozzle tip when spraying.

i NOTE

When pointing the spray wand upward, water may discharge from the sides of the spray wand nozzle. To stop this discharge, point the spray wand downward for five seconds and then resume normal operation.

5 MAINTENANCE

⚠ WARNING

Before storing, thoroughly rinse the detergent bottle to remove any detergent residue, and allow to dry completely.

6 TECHNICAL DATA

Connection	1/4 in. Quick Connect Plug Inlet
Maximum Pressure	Up to 3700 PSI

Maximum Water Flow	3 GPM
Maximum Water Temperature	104 °F

7 LIMITED WARRANTY

90-Day Warranty

Renewed/Refurbished products and batteries are protected against all defects in materials, parts or workmanship under normal use for a period of 90 days from the shipping date or in-store purchase date. All sales are final, no returns.

ITEMS NOT COVERED BY WARRANTY:

1. Any part that has become inoperative due to misuse, commercial use, abuse, neglect, accident, improper maintenance, or alteration; or
2. The unit, if it has not been operated and/or maintained in accordance with the owner's manual; or
3. Normal wear;
4. Routine maintenance items such as lubricants, blade sharpening;
5. Normal deterioration of the exterior finish due to use or exposure.

HELPLINE:

Warranty service is available by calling our toll-free helpline at 1-888-909-6757.

TRANSPORTATION CHARGES:

Transportation charges for the movement of any power equipment unit or attachment are the responsibility of the purchaser. It is the purchaser's responsibility to pay transportation charges for any part submitted for replacement under this warranty unless such return is requested in writing by Greenworks.

USA address:

Greenworks Tools
P.O. Box 1238
Mooresville,
NC 28115 L3Y 8K3

Canadian address:

Greenworks Tools Canada, Inc.
P.O. Box 93095, Newmarket, Ontario

www.greenworkstools.com



greenworks

Rev B1



P0804134-02